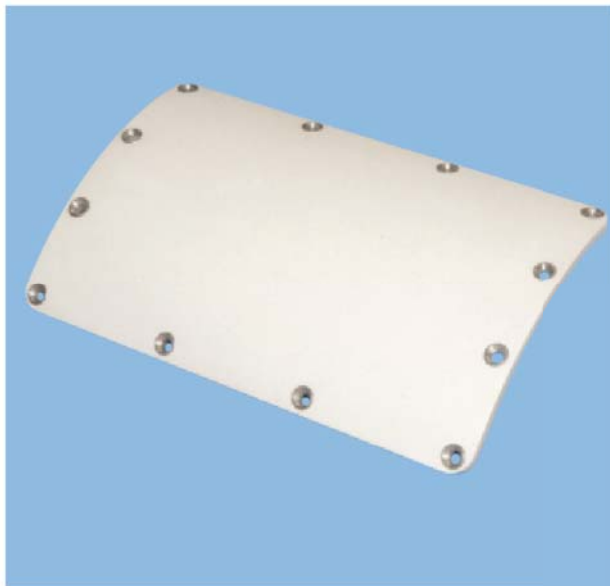




Flush-Mounted Airborne Antennas



- Optimum Performance
- Extremely Small Size
- Flight Proven

TECOM offers a line of flush-mounted antennas for airborne instrumentation applications. These antennas employ state-of-the-art design techniques that result in optimum performance within a minimum size.

Flush-mounted antennas are required in many applications where drag characteristics of blade antennas cannot be tolerated or where vehicle handling equipment or launching rails prohibit protrusions beyond the normal skin line.

TECOM antennas are designed to function alone or in arrays of two, three or more, using matched power dividers specifically designed to operate with multi-antenna installations.

Electrical Performance Specifications

Type Number	102022	102020	105025
Frequency Range	2.20 - 2.45 GHz	2.20 - 2.29 GHz	.405 - .550 GHz
VSWR (Max.):	1.8:1	1.5:1	1.5:1 Over
	45 MHz Band	Any 10 MHz Band	Any 1 MHz Band
Efficiency	80%	75%	60%
Input Connector	TNC	TNC	SMA
Weight	2.5 oz 70 g	6.0 oz 70 g	23.6 oz 670 g
Vehicle Diameter, In.	22.0*	6.0*	10.0*

Common Electrical Performance Data:

- | | | |
|---------------------------|---------------------------|------------------------------------|
| 1) Impedance: 50 Ohms | 3) Operating Temperature: | 4) Polarization: Linear |
| 2) Operating Temperature: | Continuous: 350°F, 177°C | 5) Pattern Coverage: Hemispherical |
| | 20 seconds: 1000°F, 538°C | |

Notes:

- *Typical Sizes: Antennas can be configured to your vehicle diameter.
Available Option: Power dividers are available to join the antenna elements into an array.